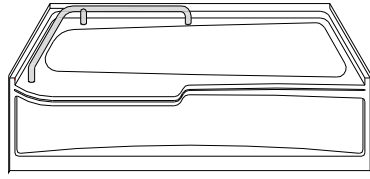


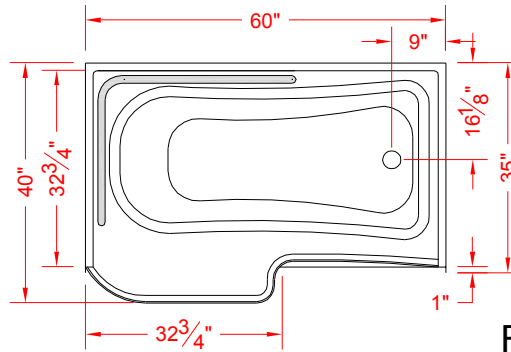
MODEL: APR6034

Remodele

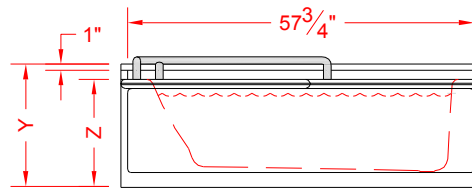
ALL ACCESSORIES OPTIONAL



PERSPECTIVE VIEW - N.T.S.
MODEL SHOWN HERE AS:
 RIGHT HAND



TOP VIEW - SCALE $\frac{3}{8}'' = 1'-0''$



FRONT ELEVATION - SCALE: $\frac{3}{8}'' = 1'-0''$

Features:

- Molded fiberglass bathtub
- Seat at wheelchair height for safe and comfortable transfer for bather and caregiver
- "Waisted" center conserves water but still delivers a higher waistline for a more comfortable soak
- The virtually flat floor with straight tub walls reduce slipping in the standing area
- Functional deck bar adds both a luxurious appearance as well as a safe guard against falling
- The sturdy seat drastically reduces the chance of falling while entering and exiting
- The lowered side adds ease to entry and exit
- The entire outer edge of the tub is a subtle but functional gripping surface
- The back has an aggressive slope to maximize reclined comfort
- The contoured apron "reserves" space between the tub and toilet thus providing an area for caregivers to assume correct lifting stance and reducing risk of injury

	UNIT HEIGHT	THRESHOLD HEIGHT
MODEL #	Y	Z*
APR6034	20-1/2"	18"
-	-	-

* - SEE BACK FOR DETAIL SECTIONS

PRODUCT SPECIFICATIONS:

- Tub shall be constructed of gelcoat/fiberglass
- Rough-In: Stud opening +1/4" -0" Nominal Dimensions.

C.S.I. FORMAT SPECIFICATION TEXT AVAILABLE

PRODUCT INFORMATION:

- Accessories: Factory installed deck bar. Polished chrome/satin stainless standard, others available.
- Colors: White as standard, others to match any major fixture manufacturer, also available with sprayable solid surface in many colors

Authorized Best Bath Dealer



Safe Bathing for people of all abilities since 1971

ACCESSORIES:

INSTALLED AT FACTORY:

- Deck bar

INSTALLED BY OTHERS:

CODES:

- Designed and manufactured in compliance with the following standards and codes:
- A.N.S.I. Z124.1 Standards for Plastic Bathtubs
 - I.P.C. International Plumbing Code
 - U.P.C. Uniform Plumbing Code

NOTICE OF LIMITATION:



We reserve the right to make revisions without notice in the design of fixtures or in packaging unless this right has specifically been waived at the time the order is accepted.